

HUNTERS®

HERE TO GET *you* THERE

The Library. Eshton Hall. Gargrave
£1,950 Per Calendar Month



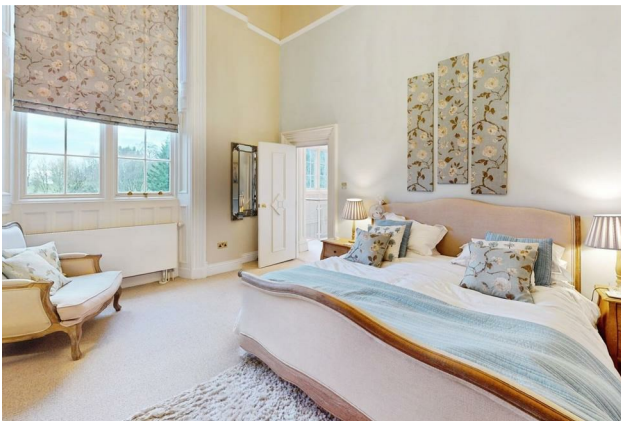
HUNTERS®

HERE TO GET *you* THERE



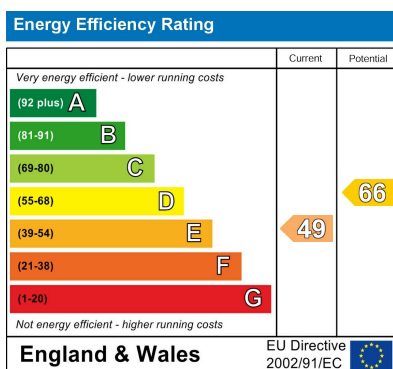
HUNTERS[®]

HERE TO GET *you* THERE





SIZES AND DIMENSIONS ARE APPROXIMATE, ACTUAL MAY VARY.



Eshton Hall can be dated back to the mid 17th century, and remained in the same family until c1960. The current building was completed around 1826 for Matthew Wilson, who was then the Deputy Lieutenant of West Riding and his step daughter, Frances, who was exceptionally wealthy in her own right. Frances built up one of Europe's leading book collections and it is believed that this came to the attention of Charlotte Bronte, who is reputed to have visited Frances at the hall. It is also suggested in the history of the hall that Queen Mary once stayed at Eshton Hall on her way north to Scotland, although this is more hearsay than proven.

Retaining this history, the superb features include original oak (now antique of course) bookcases, sixteen feet high ceilings and ornate plasterwork, which have been blended with modern and stylish fixtures and fittings to give a contemporary feel. The Grand Communal Reception Hall features a magnificent central staircase set below an atrium, with ornate ceilings and plaster work.

The Hall was converted in conjunction with English Heritage and the Yorkshire Dales National Park in 2005 to create luxury apartments and cottages. It is set in delightful formal gardens of 2.7 acres and has the most impressive views of the North Yorkshire landscape.

Simply superb in every way. Is there a finer example available in North Yorkshire?

Entering the grounds through decorative wrought iron gates with security access onto a sweeping driveway, takes you past manicured gardens leading up to allocated parking and the imposing main entrance. The views from here are breathtaking, and magnificent walks as far as your legs will take you, start from here. A further driveway leads round to a single garage.

A tastefully modernised reception hall with keypad entry system leads you into a further communal area with the grand staircase rising up to the first-floor apartments and atrium. The entrance door to The Library apartment is on the ground floor.

On entering the main reception room, the sheer grandness of the room is impressive with its high ceiling, ornate plasterwork, marble fireplace, original oak bookcases and large windows which offer views out to the stunning gardens and countryside. It is impressive and yet it feels cosy, with attractive soft furnishings and furniture and period style radiators.

A cleverly created and practical, discreet kitchen area comprises an excellent range of base and wall units with granite work surfaces and integrated appliances. With slim 'window' openings looking back into the living space so you can keep an eye on guests!

It is a fine example of how traditional and modern architecture can work, with an open tread glass and steel staircase set against the imposing bay window, which stretches across both floors and offers fine views over the garden and onto the countryside.

The spacious principal bedroom is beautifully presented and has some pleasant views to the woods at the back of the hall. With ample space for its super-king-bed, two wardrobes and a chest of drawers. The luxurious en-suite bathroom features a free-standing bath and contemporary fixtures and fittings. This room is linked to a further boutique style shower room which in turn opens into the spacious guest room. This room is equally as opulent and it too offers great views of the surrounding countryside. There is a further house shower room just off the landing.

The Library apartment has an allocated parking space at the front of the building and a single garage to the rear. Large formal communal gardens with croquet lawn also feature a spacious sun terrace /al-fresco dining area and there is fixed seating and garden ornaments dotted around. The Library has the added advantage of being adjacent to the sun terrace and it has been known to use the low level window to enter and exit when having a barbecue or drinks with family & friends.

On-Line-Bullet-Points

- One of the 2 principal apartments at Eshton Hall
- Delightful outlook onto the croquet lawn
- High quality decorations and fittings throughout
- This was the show home apartment
- Very spacious at over 1800 sq ft
- Delightful communal grounds of 2.7 acres
- Garage and parking space
- Secure gated and video entry
- 5 minutes to the shops, pubs and train station
- Tranquility is key here – the site is very quiet